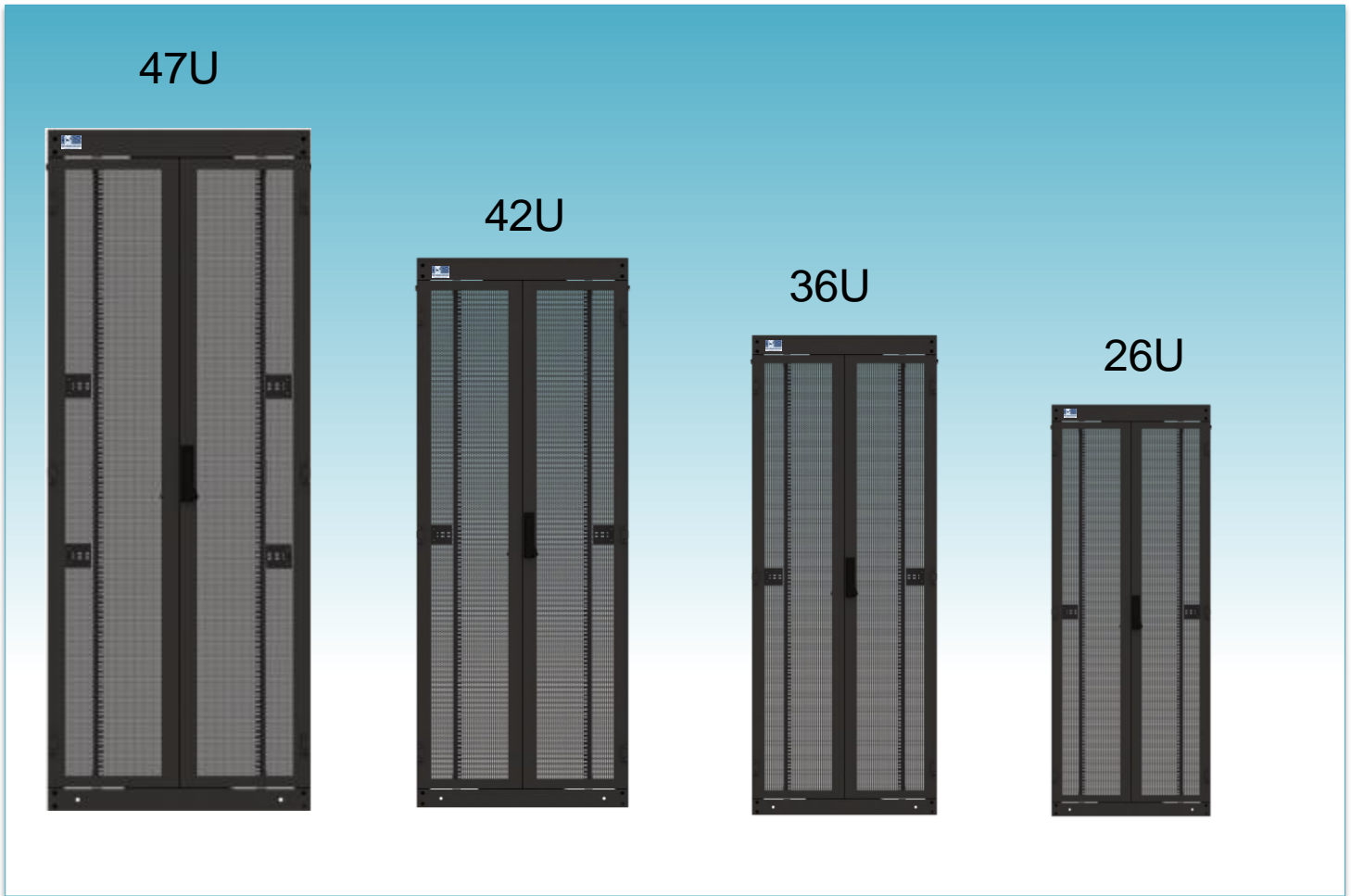




800x1200 Free standing server Cabinets



Description

HCS DataLine series includes a wide range of high quality racks, cabinets and enclosures, specially designed for structured premise cabling in local area networks (LANs), including distribution and equipment, cross connect cabinets and racks, splice boxes, climate control and many more components for both copper and fiber optic cabling systems.

HCS DataLine 11 800x1200 Free Standing Server Cabinets are suitable for both office environments & equipment rooms, having an attractive design combined with a long-lasting, solid & stable construction, guaranteed by the HCS DataLine Logo & Trademark

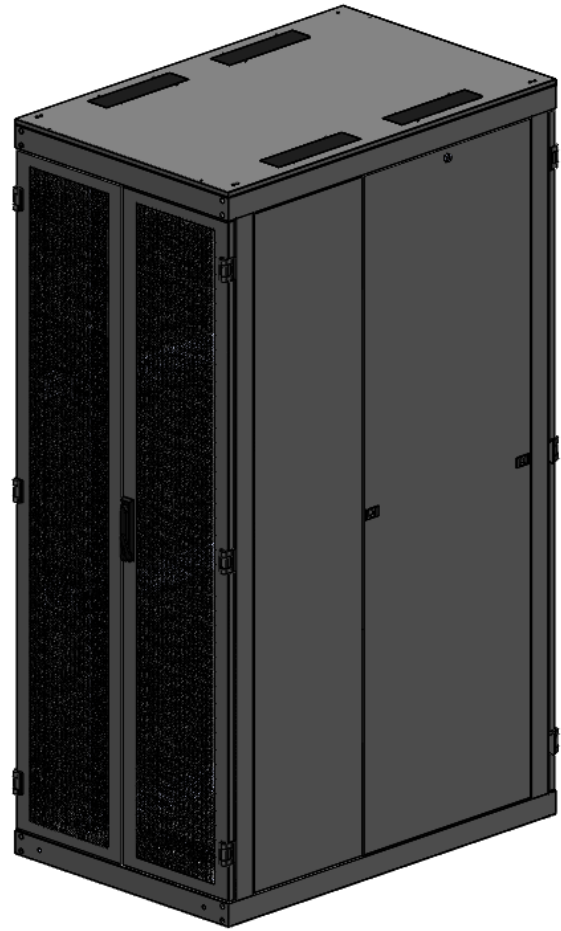
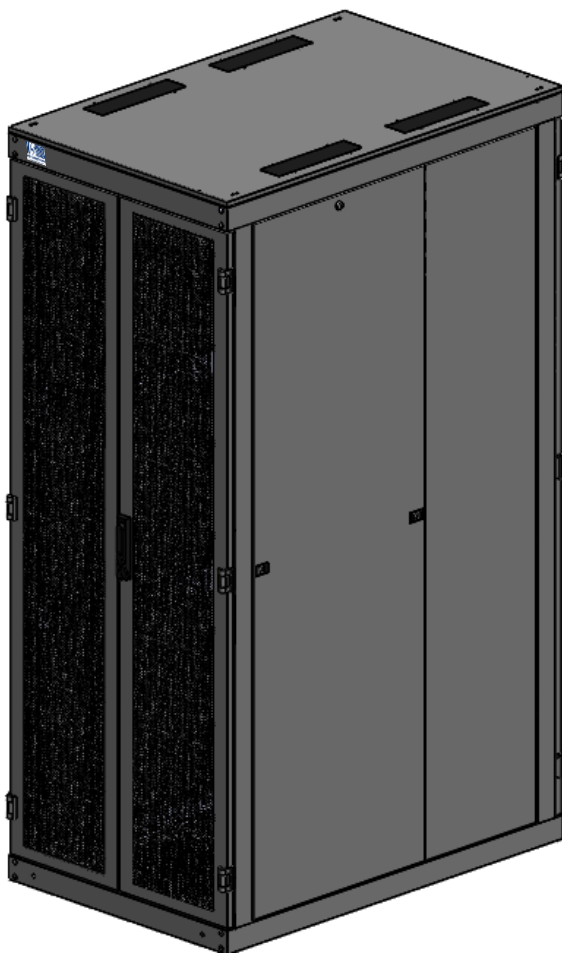
Applications

The special design of HCS DataLine 11 Free Standing Server Cabinets allows the use of a large variety and types of accessories, including 19" panels, hubs and active equipment, fixed and/or sliding shelves, fan units, power strips, pulleys, grounding and potential equalization bus bars, lighting units, stacking kits, floor fixing kits, cable management panels, and many other 19" devices and accessories

Qualifications and Approvals

HCS DataLine 11 Free Standing Server Cabinets are supported by HCS DoubleSafe™ QA Program and they comply to the following standards:

General	Steel Sheets	Powder Coating	Mechanical	Assembly	IT equipment safety	Fan Unit & Power Strips
<input type="checkbox"/> TS EN 60297-3-100/101/102 <input type="checkbox"/> DIN 41494 <input type="checkbox"/> TS EN 60529-1 <input type="checkbox"/> IP20 (Optional IP 42)	<input type="checkbox"/> DIN EN 10130-91 <input type="checkbox"/> DIN EN 10327 <input type="checkbox"/> EREĞLİ 6112	<input type="checkbox"/> DIN 67530 <input type="checkbox"/> ASTM D 2796 <input type="checkbox"/> ASTM D 3451	<input type="checkbox"/> TS EN 61587-1	<input type="checkbox"/> TS EN 60917-2-1/-2	<input type="checkbox"/> TS EN 60950-1 <input type="checkbox"/> IEC 60364-7-707	<input type="checkbox"/> TS EN 60439-1 <input type="checkbox"/> TS EN 62208



GENERAL PROPERTIES	
MATERIAL	Sheet & Galvanized steel. 1.0/1.2/1.5/2.0 mm thickness.
PAINT AND COLOR	Special steel finish with electrostatic powder coat, RAL 9005 black. Other colors available upon request.
FRONT DOOR	Double opening perforated door, multipoint europrofile cylinder lock. (135 degree opening)
REAR DOOR	Double opening perforated door, multipoint europrofile cylinder lock. (135 degree opening)
SIDE PANEL	Removable side panels, cylinder locking. Sliding locking
TOP CHASSIS	300 x 70mm brushed cable entry hole, 8x optional ventilation units
BOTTOM CHASSIS	300 x 70mm brushed cable entry hole, 4x, Sliding brushed cable entry 300 x 300mm 1x
19" PROFILES	Adjustable 4 units (U marked 2x front) 2x rear
VERTICAL CABLE ORGANIZER	Mountable front left & right vertically (optional).
SIDE VERTICAL OPEN CABLE ORGANIZER	Mountable side left / right- galvanised.
PDU	9 Way schuko type power strip
GROUNDING	Grounding Cable
LOADING CAPACITY	1500 kg max. (42U, TS EN 61587-1).

General	Steel Sheets	Powder Coating	Mechanical	Assembly	IT equipment safety	Fan Unit & Power Strips
<input type="checkbox"/> TS EN 60297-3-100/101/102 <input type="checkbox"/> DIN 41494 <input type="checkbox"/> TS EN 60529-1 <input type="checkbox"/> IP20 (Optional IP 42)	<input type="checkbox"/> DIN EN 10130-91 <input type="checkbox"/> DIN EN 10327 <input type="checkbox"/> EREĞLİ 6112	<input type="checkbox"/> DIN 67530 <input type="checkbox"/> ASTM D 2796 <input type="checkbox"/> ASTM D 3451	<input type="checkbox"/> TS EN 61587-1	<input type="checkbox"/> TS EN 60917-2-1/-2	<input type="checkbox"/> TS EN 60950-1 <input type="checkbox"/> IEC 60364-7-707	<input type="checkbox"/> TS EN 60439-1 <input type="checkbox"/> TS EN 62208

CABINETS ACCESSORIES



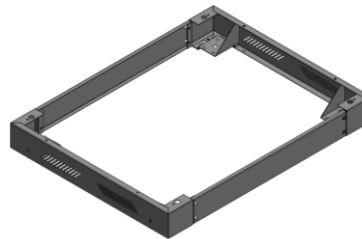
9 WAY PDU 19'' PDU



Horizontal organizer



Grounding Busbar



Plinth



Wheel

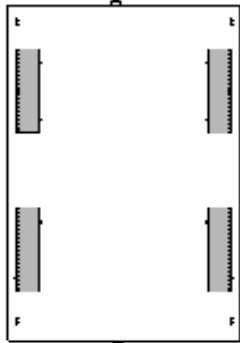


Organizer with front cover

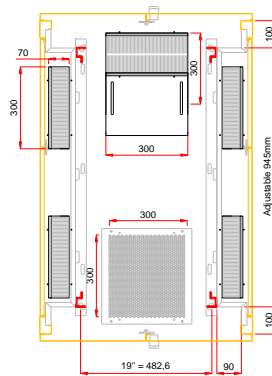
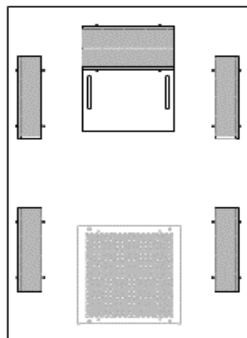
HCS P/N	Description	internal Height mm	Width mm	Depth mm	Height mm	Net Weight Kg	Notes
C11-01682 EU	16U 19" (w800 x d1200)mm DATALINE™11 FREE STANDING SERVER CABINET (Front and rear doors flat perforated double opening with europrofile cylinderlock) with 12 pcs Brush	712	780	1200	862	N/A	
C11-02082 EU	20U 19" (w800 x d1200)mm DATALINE™11 FREE STANDING SERVER CABINET (Front and rear doors flat perforated double opening with europrofile cylinderlock) with 12 pcs Brush	890	780	1200	1040	N/A	
C11-02282 EU	22U 19" (w800 x d1200)mm DATALINE™11 FREE STANDING SERVER CABINET (Front and rear doors flat perforated double opening with europrofile cylinderlock) with 12 pcs Brush	980	780	1200	1130	N/A	
C11-02682 EU	26U 19" (w800 x d1200)mm DATALINE™11 FREE STANDING SERVER CABINET (Front and rear doors flat perforated double opening with europrofile cylinderlock) with 12 pcs Brush	1156	780	1200	1306	N/A	
C11-03282 EU	32U 19" (w800 x d1200)mm DATALINE™11 FREE STANDING SERVER CABINET (Front and rear doors flat perforated double opening with europrofile cylinderlock) with 12 pcs Brush	1422	780	1200	1572	N/A	
C11-03682 EU	36U 19" (w800 x d1200)mm DATALINE™11 FREE STANDING SERVER CABINET (Front and rear doors flat perforated double opening with europrofile cylinderlock) with 12 pcs Brush	1600	780	1200	1750	N/A	
C11-03982 EU	39U 19" (w800 x d1200)mm DATALINE™11 FREE STANDING SERVER CABINET (Front and rear doors flat perforated double opening with europrofile cylinderlock) with 12 pcs Brush	1734	780	1200	1884	N/A	
C11-04282 EU	42U 19" (w800 x d1200)mm DATALINE™11 FREE STANDING SERVER CABINET (Front and rear doors flat perforated double opening with europrofile cylinderlock) with 12 pcs Brush	1867	780	1200	2028	N/A	
C11-04482 EU	44U 19" (w800 x d1200)mm DATALINE™11 FREE STANDING SERVER CABINET (Front and rear doors flat perforated double opening with europrofile cylinderlock) with 12 pcs Brush	1956	780	1200	2106	N/A	
C11-04782 EU	47U 19" (w800 x d1200)mm DATALINE™11 FREE STANDING SERVER CABINET (Front and rear doors flat perforated double opening with europrofile cylinderlock) with 12 pcs Brush	2090	780	1200	2240	N/A	

800x1200 Free standing Cabinets

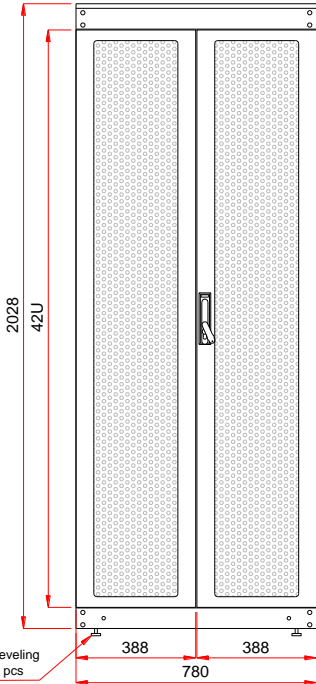
Top View



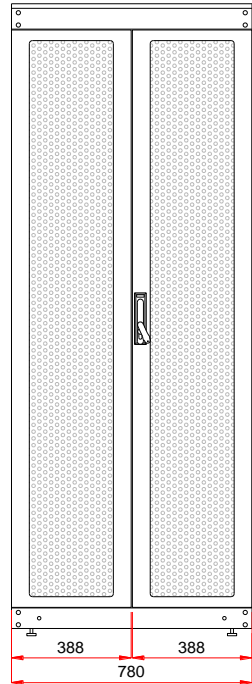
Bottom Chassis



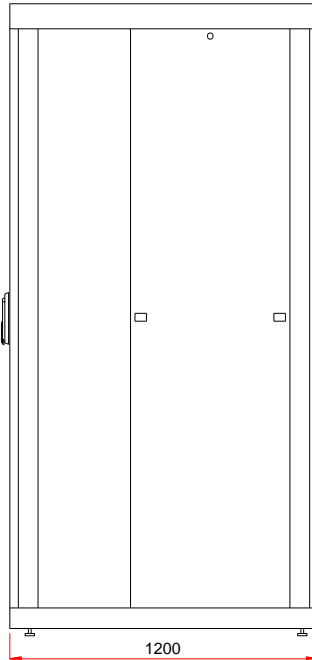
Back View



Front View



Side View



Without front door View

